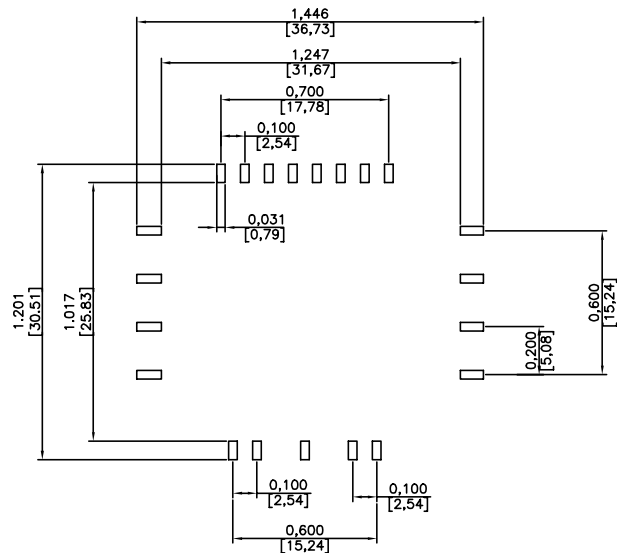
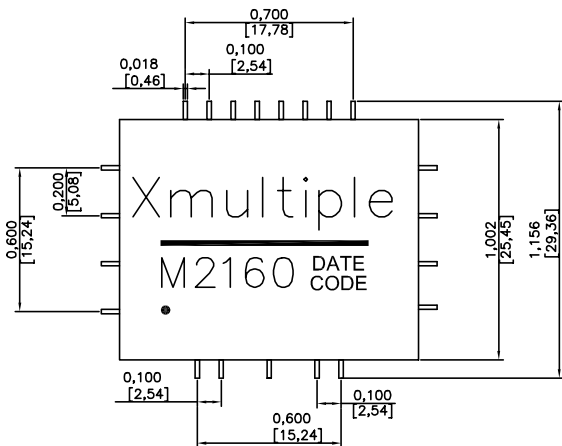
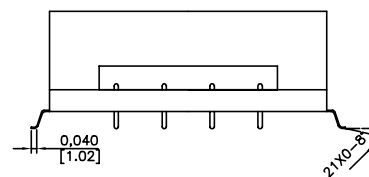
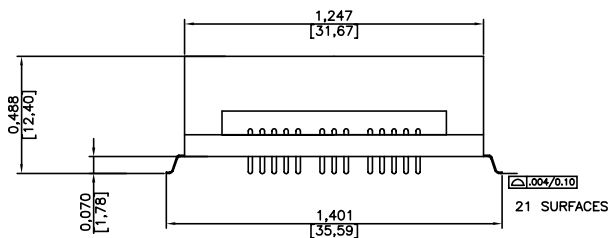


MECHANICALS



SUGGESTED PAD LAYOUT



Dimensions:Inch[mm] all tolerances:0.01[0.25]

X MULTIPLE		CONNECTING THE INFORMATION AGE
XMULTIPLE ASIA 4F, No. 347, Yang Guang St., Neihu Chiu, Taipei, Taiwan 11475	XMULTIPLE USA 543 Country Club Drive #B 128 Simi Valley, CA 93065	CUSTOMER/NO:
THIS DRAWING IS A CONTROLLED DOCUMENT.		DWG NO: XTFZ-M2160
TITLE: DIPLEXERS FOR HFC EQUIPMENT AND CABLE MODEMS FOR INTERNATIONAL ADDLICIONS		DRAWN: TARA
PART NO: XTFZ-M2160		CHKD: C. TSAI
	DIMENSIONS	SHEET
	inch [mm]	1 of 2
	REV	01
	DATE:	11/03/04

TEST NOTES: (25±5°C)

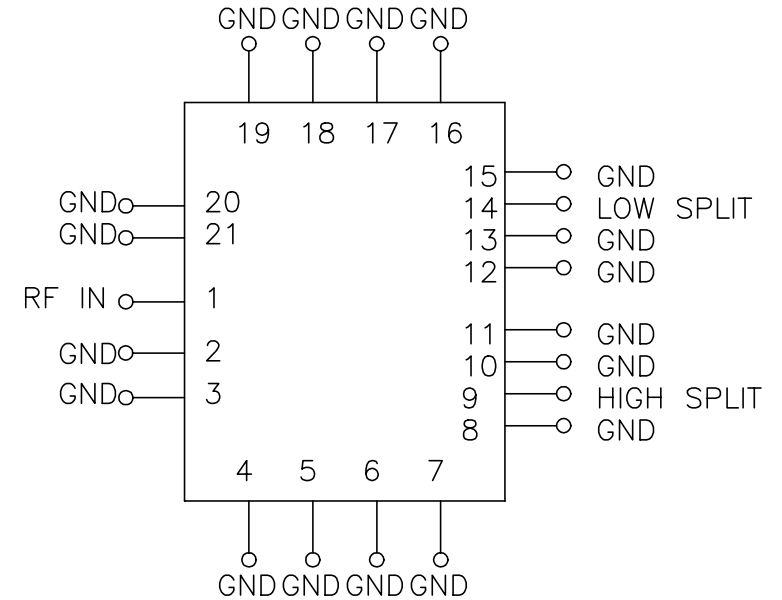
SCHEMATIC

LOW PASS FILTER:

- 1.INSERTION LOSS(PASSBAND):
-1.2dB MAXIMUM AT 5MHz TO 65MHz
- 2.RETURN LOSS:
-20dB MINIMUM AT 5MHz TO 65MHz

HIGH PASS FILTER

- 1.INSERTION LOSS(PASSBAND):
-1.2dB MAXIMUM AT 85MHz TO 870MHz
- 2.RETURN LOSS:
-20dB MINIMUM AT 85MHz TO 750MHz
-18dB MINIMUM AT 751MHz TO 870MHz
- 3.IMPEDANCE:
75 OHMS ALL PORTS
- 4.CROSSOVER ISOLATION:
-30dB MINIMUM AT 65MHz TO 85MHz
- 5.FLOOR ISOLATION:
-45dB MINIMUM AT 5MHz TO 65MHz
-43dB MINIMUM AT 85MHz TO 400MHz
-37dB MINIMUM AT 400MHz TO 870MHz



		CONNECTING THE INFORMATION AGE	
X MULTIPLE ASIA 4F, No. 347, Yang Guang St., Neihu Chiu, Taipei, Taiwan 11475		X MULTIPLE USA 543 Country Club Drive #B 128 Simi Valley, CA 93065	
THIS DRAWING IS A CONTROLLED DOCUMENT.		CUSTOMER/NO: XTFZ-M2160	
TITLE: DIPLEXERS FOR HFC EQUIPMENT AND CABLE MODEMS FOR INTERNATIONAL ADDLICATIONS		DRAWN: TARA	
PART NO: XTFZ-M2160		CHKD: C. TSAI	
	DIMENSIONS	SHEET	REV
	inch [mm]	2 of 2	01
		DATE: 11/03/04	