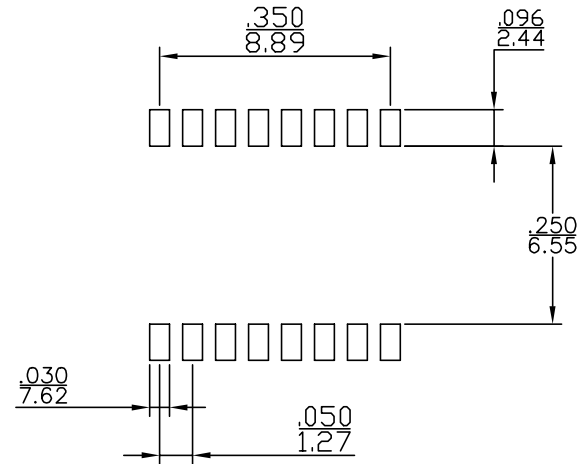
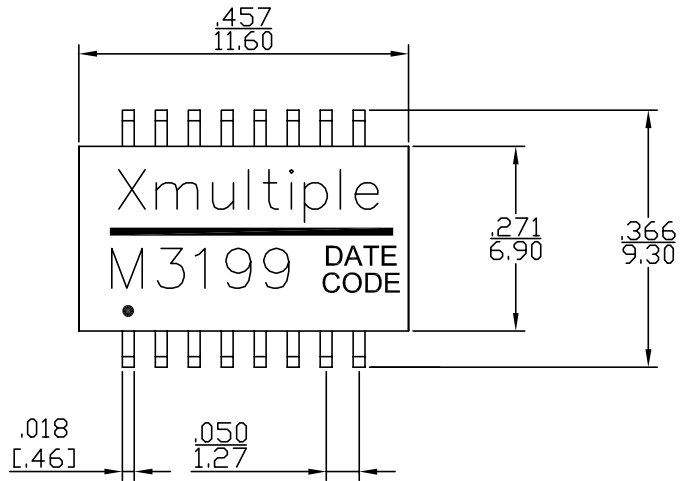
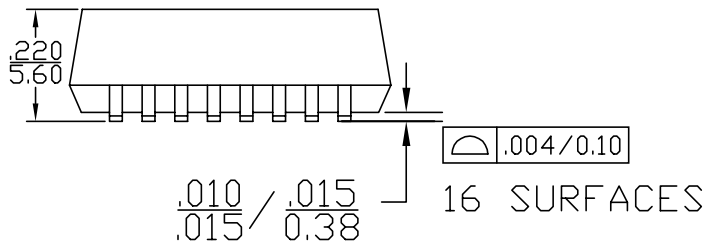


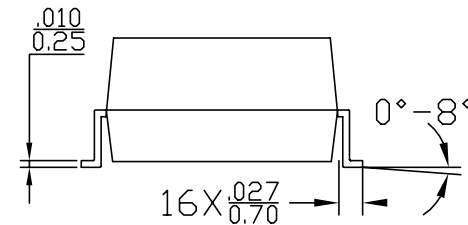
MECHANICALS



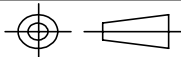
SUGGESTED PAD LAYOUT



FINAL OUTLINE



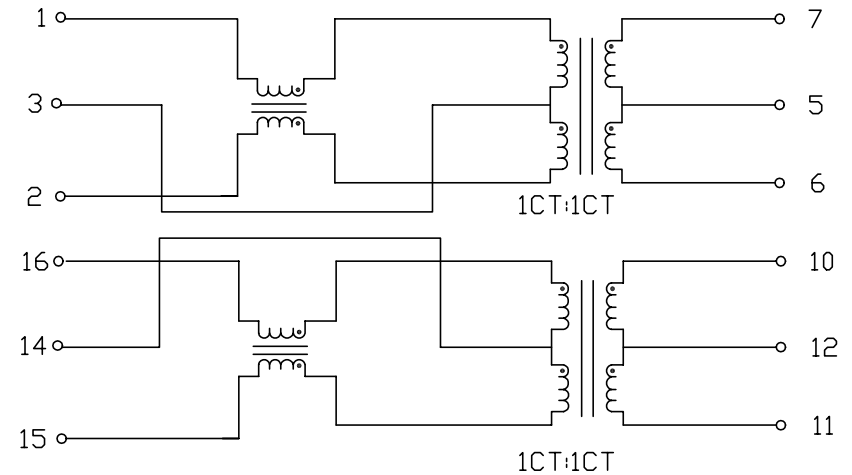
Dimensions: Inch [mm] all tolerances: 0.01 [0.25]


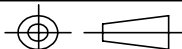
X MULTIPLE			CONNECTING THE INFORMATION AGE
XMULTIPLE ASIA 4F, No. 347, Yang Guang St., Neihu Chiu, Taipei, Taiwan 11475	XMULTIPLE USA 543 Country Club Drive #B 128 Simi Valley, CA 93065	CUSTOMER/NO:	
THIS DRAWING IS A CONTROLLED DOCUMENT.			DWG NO: XTFZ-M3199
TITLE: LAN TRANSFORMER			DRAWN: TARA
PART NO: XTFZ-M3199			CHKD: C. TSAI
	DIMENSIONS Inch [mm]	SHEET 1 of 2	REV 01
			DATE: 15/04/04

TEST NOTES: (25±5°C)

SCHEMATIC

- 1. TR: (100KHz, 0.1V);
 PINS: (1,2):(7,6)=1:1±3%
 PINS: (16,15):(10,11)=1:1±3%
- 2. LX: (100KHz, 100mV, 8mA, DC Bias)
 PINS: (11,10),(7,6)=350uH MIN
- 3. DCR:
 PINS: (10,11)(7,6)=0.9 OHMS MAX
 PINS: (1,2),(16,15) =1.2 OHMS MAX
- 4. HIPOT:
 PINS: (1,2,3) TO (7,5,16)=1500VAC FOR 2 SECONDS
 PINS: (16,14,15) TO (11,10,12)=1500VAC FOR 2 SECONDS
- 5. RETURN LOSS:
 -18dB MINIMUM AT 0.5MHz TO 30MHz;
 -15.5dB MINIMUM AT 40MHz;
 -13.6dB MINIMUM AT 50MHz;
 -12dB MINIMUM AT 60MHz TO 80MHz



			CONNECTING THE INFORMATION AGE	
XMULTIPLE ASIA 4F, No. 347, Yang Guang St., Neihu Chiu, Taipei, Taiwan 11475		XMULTIPLE USA 543 Country Club Drive #B 12B Simi Valley, CA 93065		CUSTOMER/NO:
THIS DRAWING IS A CONTROLLED DOCUMENT.				
TITLE: LAN TRANSFORMER			DWG NO: XTFZ-M3199	
PART NO: XTFZ-M3199			DRAWN: TARA	
			DIMENSIONS inch [mm]	SHEET 2 of 2
			REV 01	CHKD: C. TSAI
			DATE: 15/04/04	