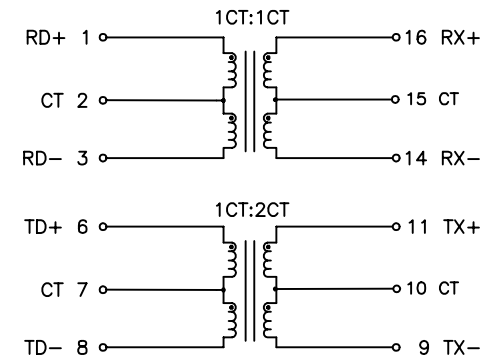


SUGGESTED PAD LAYOUT

TEST NOTES:

- 1.TR:(10KHz,0.01V);
PINS:(1,3):(16,14)=1:1±3%; PINS:(6,8):(11,9)=1:2±3%
- 2.LX:(10KHz,10mV)
PINS: (16,14),(6,8)=1.2mH MINIMUM
- 3.L.L(1MHZ,1V)
PINS:16,14 WITH (1,2,3SHORT)=0.6uH MAXIMUM
PINS: 6-8 WITH (11,10,9 SHORT)=0.6uH MAXIMUM
- 4.CWW(1MHZ,1V)
PINS:(1,2,3)TO(16,15,14)=30pF MAXIMUM
PINS:(6,7,8)TO(11,10,9)=30pF MAXIMUM
- 5.DCR:
PINS:(11,10),(10-9) = 0.7 Ω MAXIMUM
PINS:(1,2),(2,3),(16,15),(15,14),(6,7),(7,8)=0.4 Ω MAXIMUM
- 6.HIPOT:
PINS(1,2,...,8)TO(9,10,...,16)=1500VAC



SCHEMATIC

<h1>X MULTIPLE</h1>		CONNECTING THE INFORMATION AGE	
XMULTIPLE ASIA 4F, No. 347, Yong Guang St., Neihu Chiu, Taipei, Taiwan 11475		XMULTIPLE USA 543 Country Club Drive #B 128 Simi Valley, CA 93065	
THIS DRAWING IS A CONTROLLED DOCUMENT.		CUSTOMER/NO:	
TITLE:		DWG NO: XTFZ-M3003	
PART NO: XTFZ-M4039		DRAWN: JEFF	
		CHKD: C. TSAI	
		DATE: 14/07/03	
DIMENSIONS mm[inch]	SHEET 1 of 2	REV 01	