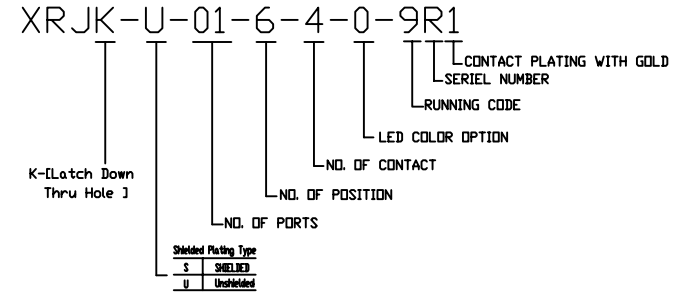


SUGGESTED PCB LAYOUT
TOP VIEW



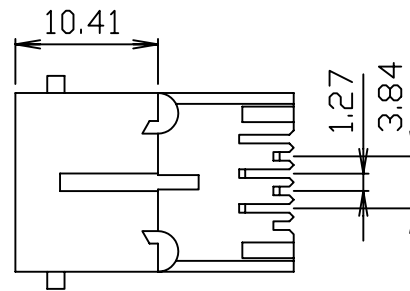
NOTES:

1. MATERIALS:

HOUSING-PBT POLYESTER UL94V-0
MIXED GLASS FIBER,
STANDARD COLOR-BLACK
CONTACTS-0.35mm THICK PHOS-BRONZE
PLATED WITH 15u' GOLD AND
TIN IN SOLDER AREA.

2. CAVITY CONFIRMS TO FCC RULES AND REGULATIONS
PART 68,SUBPART F.

3. UNSPECIFIED TOLERANCE: .XX ±0.25[0.010]
.X ±0.30[0.012]



RoHS Compliant

X MULTIPLE		CONNECTING THE INFORMATION AGE	
XMULTIPLE ASIA 4F, No. 347, Yang Guang St., Nehru Chiu, Taipei, Taiwan 11475		XMULTIPLE USA 1420 Los Angeles Ave., Suite G, Simi Valley, CA 93065	
THIS DRAWING IS A CONTROLLED DOCUMENT.		G/NO:	
TITLE: RJ11, Connectors, W/LED,6P,4C, Unshielded, Thru-Hole		DWG NO: XRJK-U-01-6-4-0-9R1	
PART NO: XRJK-U-01-6-4-0-9R1		DRAWN: RUNES	
		CHKD: JEFF	
		DATE: Jan.23,06	
UNIT mm[inch]	SHEET 1 of 1	REV 01	