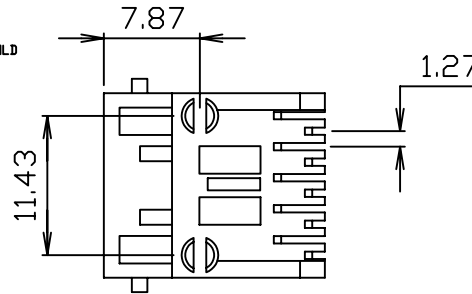
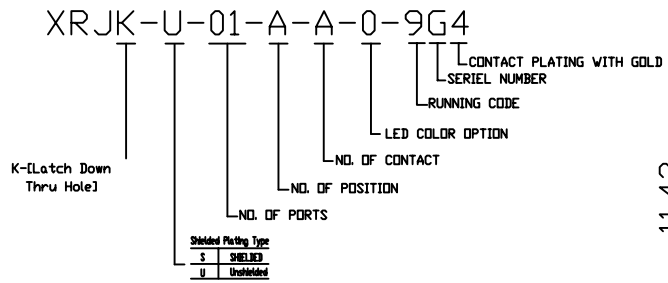


SUGGESTED PCB LAYOUT  
TOP VIEW



NOTES:

1. MATERIALS:  
HOUSING-PBT POLYESTER UL-94V-0 MIXED GLASS FIBER.  
STANDARD COLOR-BLACK  
CONTACTS-0.35mm THICK PHOS-BRONZE PLATED WITH 6u' GOLD AND TIN IN SOLDER AREA.
2. JACK CAVITY CONFORMS TO FCC RULES AND REGULATIONS PART 68, SUBPART F.
3. UNSPECIFIED TOLERANCE: .XX ±0.25[0.010]  
.X ±0.30[0.012]

# RoHS Compliant

<b>X</b> MULTIPLE		CONNECTING THE INFORMATION AGE	
MULTIPLE ASIA 4F, No. 347, Yang Guang St., Neihu Chu, Taipei, Taiwan 11475		MULTIPLE USA 1420 Los Angeles Ave., Suite G, Simi Valley, CA 93065	
THIS DRAWING IS A CONTROLLED DOCUMENT.		G/NO:	
TITLE: RJ45 Connectors, W/O LED, 10P, 10C, Unshielded, Thru-Hole		DWG NO: XRJK-U-01-A-A-0-9G4	
PART NO: XRJK-U-01-A-A-0-9G4		DRAWN: AUSTIN	
		CHKD: JEFF	
		DATE: Jan.23,06	
		UNIT mm[inch]	SHEET 1 of 1
		REV 01	