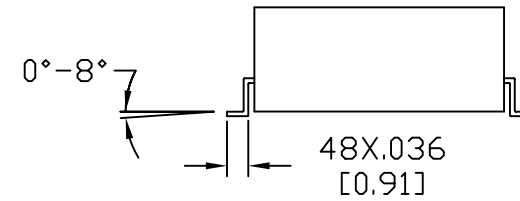
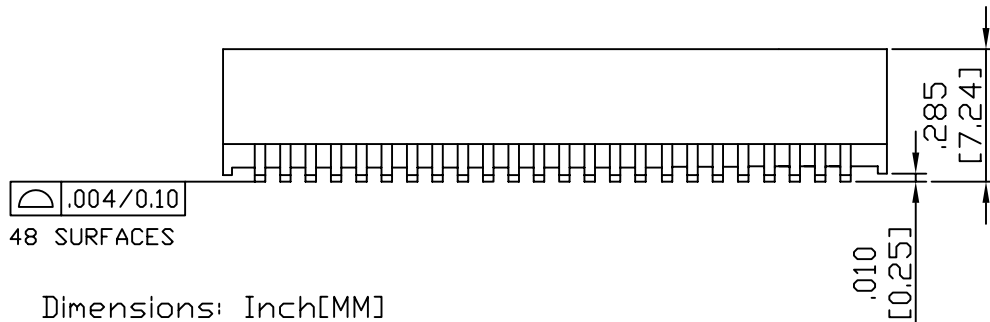
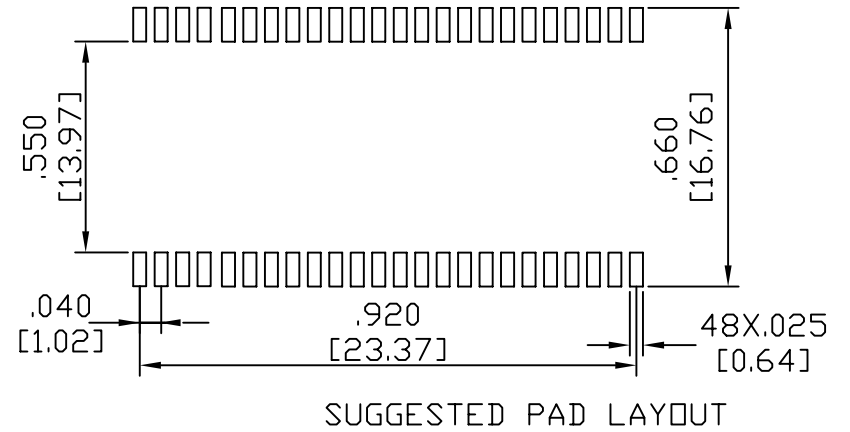
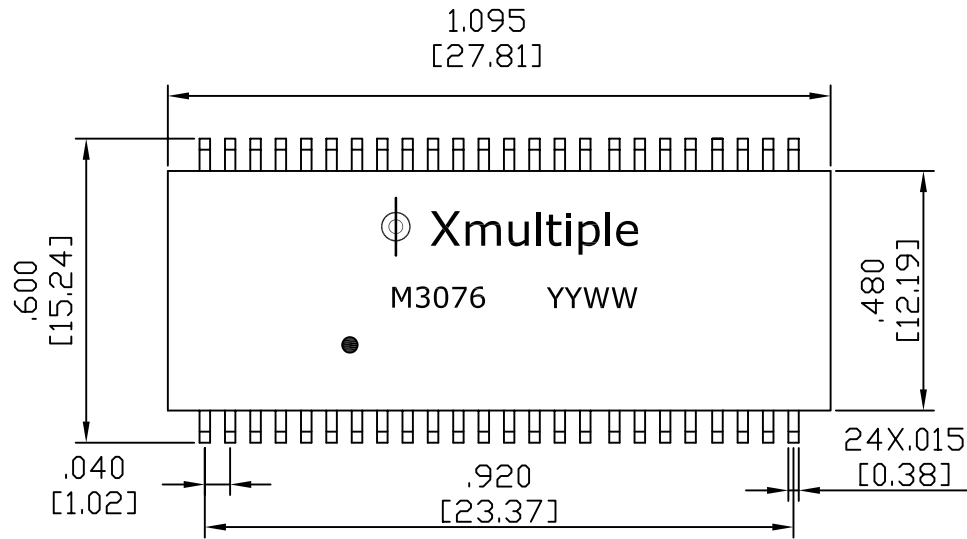


1. MECHANICAL DIMENSIONS :



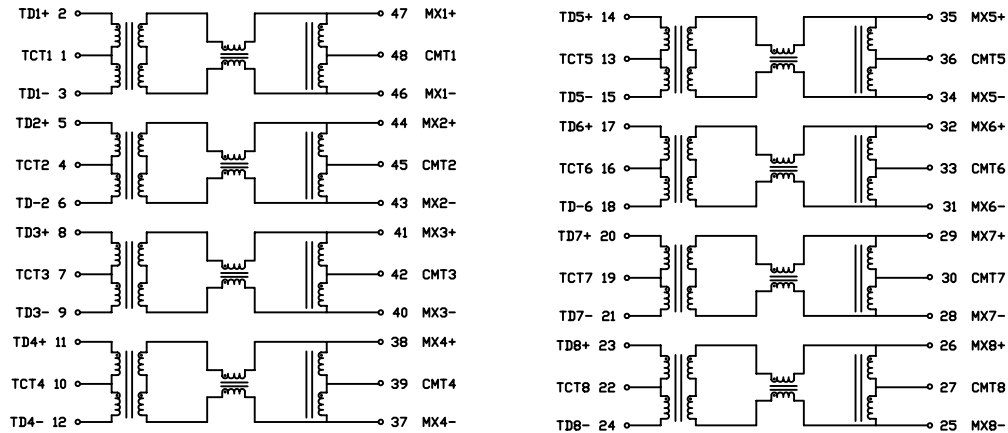
Dimensions: Inch[MM]

UNLESS OTHERWISE SPECIFIED DIM.
TOLERANCES ARE: 0.1

RoHS Compliant

X MULTIPLE		THE INFORMATION AGE	
XMULTIPLE ASIA 4F, No. 347, Yang Guang St., Neihu Chiu, Taipei, Taiwan 11475		XMULTIPLE USA 1420 Los Angeles Ave., Suite G, Simi Valley, CA 93065	
THIS DRAWING IS A CONTROLLED DOCUMENT.		G/NO: XTFZ-M3076	
TITLE: 1000 Base-T, MAGNETICS MODULES, Designed to Support 1:1 Turns Ratio Transceivers		DRAWN: AUSTIN	
PART NO: XTFZ-M3076		CHKD: JEFF	
		UNIT mm[Inch J]	SHEET 1 of 2
		REV 02	DATE: May.09.06

2. SCHEMATIC:



3. ELECTRICAL CHARACTERISTICS :

TEST NOTES:($25 \pm 5^{\circ}\text{C}$)

- 1.TR:(100KHz,0.1V);
 PINS:(2,3):(47,46)=1:1 $\pm 3\%$:(14,15):(35,34)=1:1 $\pm 3\%$
 PINS:(5,6):(44,43)=1:1 $\pm 3\%$:(17,18):(32,31)=1:1 $\pm 3\%$
 PINS:(8,9):(41,40)=1:1 $\pm 3\%$:(20,21):(29,28)=1:1 $\pm 3\%$
 PINS:(11,12):(38,37)=1:1 $\pm 3\%$:(23,24):(26,25)=1:1 $\pm 3\%$
- 2.LX:(100KHz,100mV,8mA, DC Bias)
 PINS:(47,46),(44,43),(41,40),(38,37)=350uH MIN
 PINS:(35,34),(32,31),(29,28),(26,25)=350uH MIN
- 3.DCR:
 PINS:(47,46),(44,43),(41,40),(38,37)=1.2 OHMS MAX
 PINS:(35,34),(32,31),(29,28),(26,25)=1.2 OHMS MAX
 PINS:(2,3),(5,6),(8,9),(11,12)=1.2 OHMS MAX
 PINS:(14,15),(17,18),(20,21),(23,24)=1.2 OHMS MAX
- 4.HIPOT:
 PINS:(1,...12)TO(48,..37)=1500VAC FOR 60 SECONDS
 PINS:(13,..24)TO(36,..25)=1500VAC FOR 60 SECONDS
- 5.INSERTION LOSS:
 -1.4dB MAXIMUM AT 0.1MHz TO 100MHz;
- 6.RETURN LOSS:
 -16dB MINIMUM AT 1MHz TO 40MHz;
 -14.4dB MINIMUM AT 40MHz TO 50MHz;
 -13.1dB MINIMUM AT 50MHz TO 60MHz;
 -12.0dB MINIMUM AT 60MHz TO 80MHz;
 -10dB MINIMUM AT 80MHz TO 100MHz
- 7.CROSS TALK:
 -43.5dB MINIMUM AT 1MHz TO 30MHz;
 -37.5dB MINIMUM AT 30MHz TO 60MHz;
 -33dB MINIMUM AT 60MHz TO 100MHz;
- 8.DIFFERENTIAL TO COMMON MODE REJECTION:
 -45dB MINIMUM AT 1MHz TO 30MHz;
 -40dB MINIMUM AT 30MHz TO 60MHz;
 -35dB MINIMUM AT 60MHz TO 100MHz

RoHS Compliant

X MULTIPLE		THE INFORMATION AGE	
XMULTIPLE ASIA 4F, No. 347, Yang Guang St. Neihu Chiu, Taipei, Taiwan 11475		XMULTIPLE USA 1420 Los Angeles Ave., Suite G, Simi Valley, CA 93065	
THIS DRAWING IS A CONTROLLED DOCUMENT.		G/NO:	
TITLE: 1000 Base-T, MAGNETICS MODULES, Designed to Support 1:1 Turns Ratio Transceivers		DWG NO: XTFZ-M3076	
PART NO: XTFZ-M3076		DRAWN: AUSTIN	
		CHKD: JEFF	
		DATE: May,09,06	
UNIT mm[Inch] J	SHEET 2 of 2	REV 02	