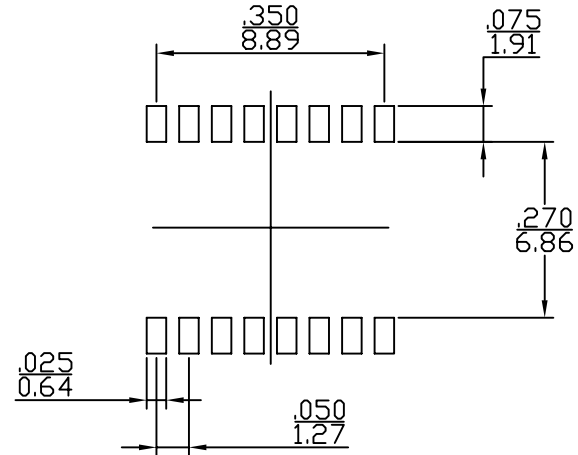
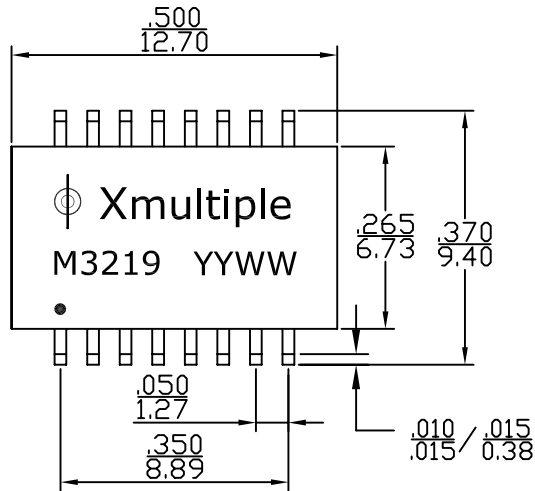
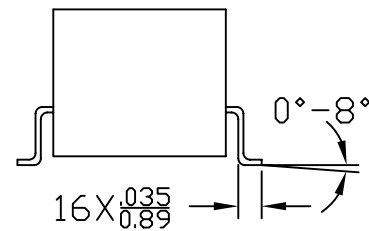
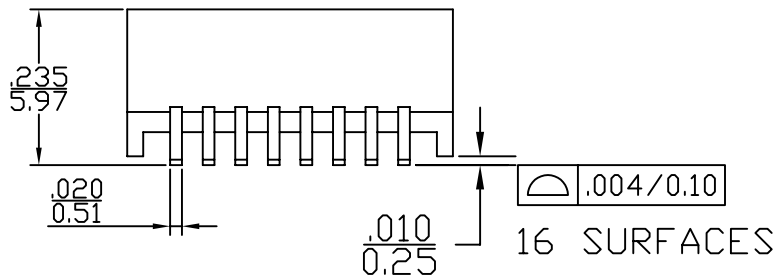


1. MECHANICAL DIMENSIONS :



SUGGESTED PAD LAYOUT



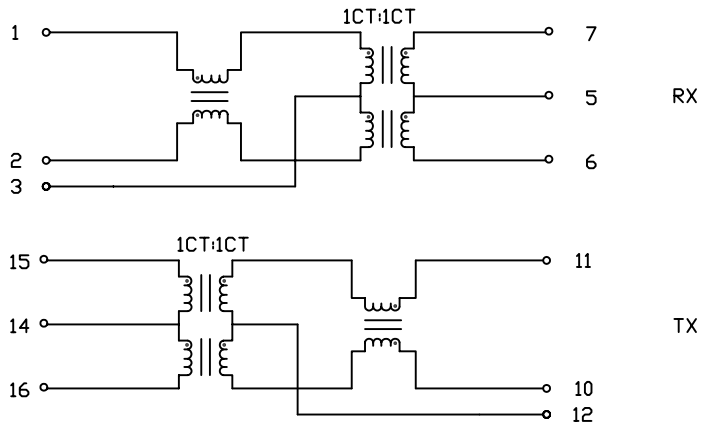
RoHS Compliant

Dimensions: Inches/mm

Unless otherwise specified, all tolerances are $\pm .010 / 0.25$

X MULTIPLE		THE INFORMATION AGE	
XMULTIPLE ASIA 4F, No. 347, Yang Guang St., Neihu Chiu, Taipei, Taiwan 11475		XMULTIPLE USA 1420 Los Angeles Ave., Suite G, Simi Valley, CA 93065	
THIS DRAWING IS A CONTROLLED DOCUMENT.		G/NO:	
TITLE: 10/100 BASE-T MAGNETICS MODULES		DWG NO: XTFZ-M3219	
PART NO: XTFZ-M3219		DRAWN: AUSTIN	
		CHKD: JEFF	
		UNIT mm [inch]	SHEET 1 of 2
		REV 02	DATE May.09.06

2. SCHEMATIC:



3. ELECTRICAL CHARACTERISTICS :

TEST NOTES: (25±5°C)

1. TR: (100KHz, 0.1V);
 PINS: (1,2): (7,6)=1: 1±3%
 PINS: (15,16): (11,10)=1: 1±3%
2. LX: (100KHz, 100mV, 8mA, DC Bias)
 PINS: (1,2), (11,10)=350uH MIN
3. DCR:
 PINS: (1,2), (11,10)=1.2 OHMS MAX
 PINS: (15,16), (7,6)=1.0 OHMS MAX
4. HIPOT:
 PINS: (1,2,3) TO (7,5,6)=1500VAC FOR 60 SECONDS
 PINS: (15,14,16) TO (11,10,12)=1500VAC FOR 60 SECONDS
5. INSERTION LOSS:
 -1.1dB MAXIMUM AT 0.3MHz TO 125MHz;
6. RETURN LOSS:
 -20dB MINIMUM AT 1MHz TO 30MHz;
 -14dB MINIMUM AT 30MHz TO 60MHz;
 -11.5dB MINIMUM AT 60MHz TO 80MHz
7. CROSS TALK:
 -45dB MINIMUM AT 1MHz TO 30MHz;
 -40dB MINIMUM AT 30MHz TO 60MHz;
 -35dB MINIMUM AT 60MHz TO 100MHz
8. DCMR:
 -42dB MINIMUM AT 1MHz TO 30MHz;
 -37dB MINIMUM AT 30MHz TO 60MHz;
 -33dB MINIMUM AT 60MHz TO 100MHz

RoHS Compliant

X MULTIPLE		THE INFORMATION AGE	
XMULTIPLE ASIA 4F, No. 347, Yang Guang St., Neihu Chiu, Taipei, Taiwan 11475		XMULTIPLE USA 1420 Los Angeles Ave., Suite G, Simi Valley, CA 93065	
THIS DRAWING IS A CONTROLLED DOCUMENT.		G/NO:	
TITLE: 10/100 BASE-T MAGNETICS MODULES		DWG NO: XTFZ-M3219	
PART NO: XTFZ-M3219		DRAWN: AUSTIN	
		CHKD: JEFF	
		DATE: May.09.06	
UNIT	SHEET	REV	
mm[inch]	2 of 2	02	