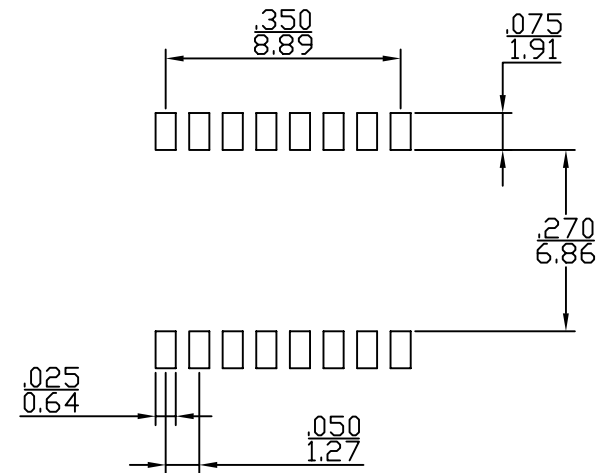
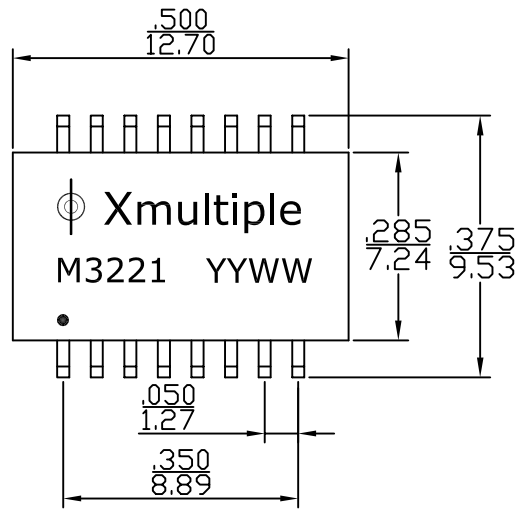
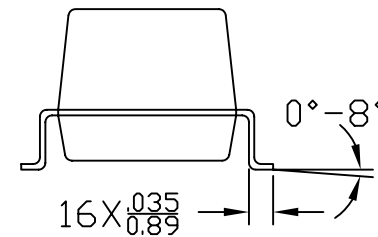
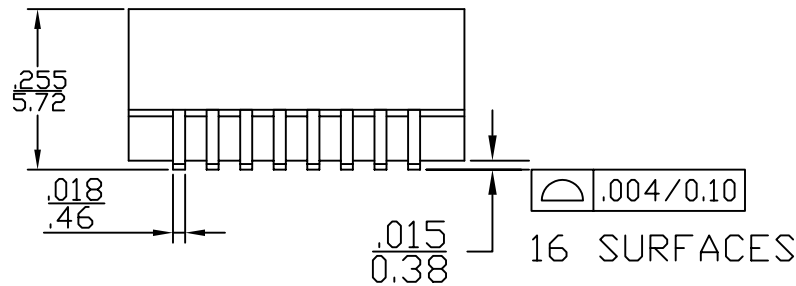


1. MECHANICAL DIMENSIONS :



SUGGESTED PAD LAYOUT



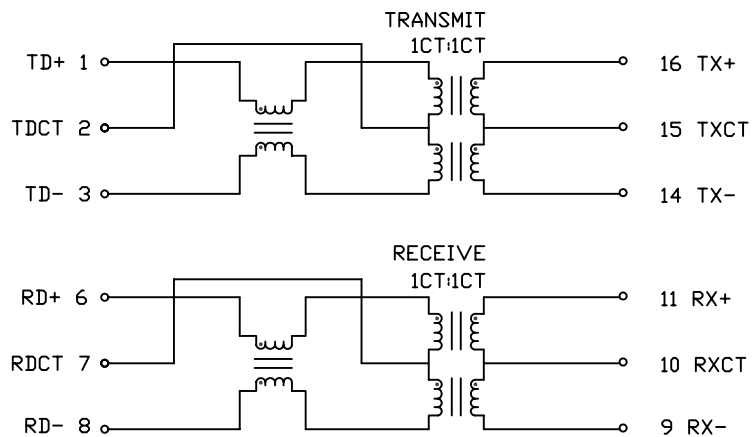
RoHS Compliant

Dimensions: Inches/mm

Unless otherwise specified, all tolerances are ± 0.010
 0.25

X MULTIPLE		THE INFORMATION AGE	
XMULTIPLE ASIA 4F, No. 347, Yang Guang St., Neihu Chiu, Taipei, Taiwan 11475		XMULTIPLE USA 1420 Los Angeles Ave., Suite G, Simi Valley, CA 93065	
THIS DRAWING IS A CONTROLLED DOCUMENT.		G/NO:	
TITLE: 10/100 BASE-T LAN MAGNETICS SINGLE PORT TRANSFORMER MODULES		DWG NO: XTFZ-M3221	
PART NO: XTFZ-M3221		DRAWN: AUSTIN	
		CHKD: JEFF	
		DATE: May.09.06	
UNIT mm[inch]	SHEET 1 of 2	REV 02	

2. SCHEMATIC:



3. ELECTRICAL CHARACTERISTICS :

TEST NOTES: (25±5°C)

- 1.TR: (100KHz,0.1V);
 PINS: (1,3):(16,14)=1:1±3%
 PINS: (6,8):(11,9)=1:1±3%
- 2.LX: (100KHz,100mV,8mA, DC Bias)
 PINS: (16,14),(11,9)=350uH MIN
- 3.DCR:
 PINS: (1,3),(6,8)=1.2 OHMS MAX
 PINS: (16,14),(11,9)=1.0 OHMS MAX
- 4.HIPOT:
 PINS: (1,2,3)TO(16,15,14)=1500VAC FOR 60 SECONDS
 PINS: (6,7,8)TO(11,10,9)=1500VAC FOR 60 SECONDS
- 5.INSERTION LOSS:
 -1.0dB MAXIMUM AT 0.1MHz TO 100MHz;
- 6.RETURN LOSS:
 -16dB MINIMUM AT 1MHz TO 30MHz;
 -12dB MINIMUM AT 30MHz TO 60MHz;
 -10dB MINIMUM AT 60MHz TO 80MHz
- 7.CROSS TALK:
 -65dB MINIMUM AT 1MHz;
 -55dB MINIMUM AT 30MHz;
 -45dB MINIMUM AT 60MHz
 -35dB MINIMUM AT 100MHz;
- 8.CMRR:
 -40dB MINIMUM AT 0.1MHz
 -30dB MINIMUM AT 100MHz

RoHS Compliant

X MULTIPLE		THE INFORMATION AGE	
XMULTIPLE ASIA 4F, No. 347, Yang Guang St., Neihu Chiu, Taipei, Taiwan 11475		XMULTIPLE USA 1420 Los Angeles Ave., Suite G, Simi Valley, CA 93065	
THIS DRAWING IS A CONTROLLED DOCUMENT.		G/NO: DWG NO: XTFZ-M3221	
TITLE: 10/100 BASE-T LAN MAGNETICS SINGLE PORT TRANSFORMER MODULES		DRAWN: AUSTIN	
PART NO: XTFZ-M3221		CHKD: JEFF	
		UNIT mm[inch]	SHEET 2 of 2
		REV 02	DATE: May.09.06