

1. MECHANICAL DIMENSIONS :

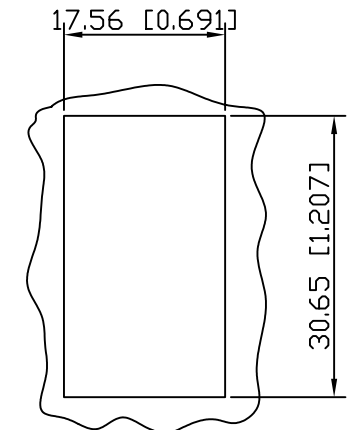
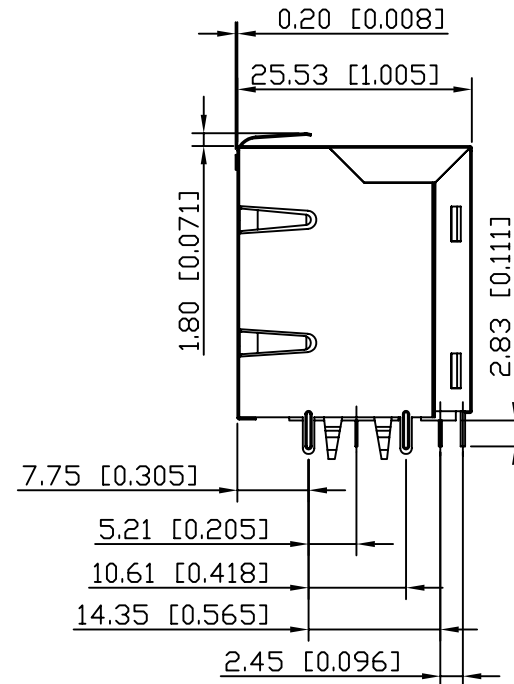
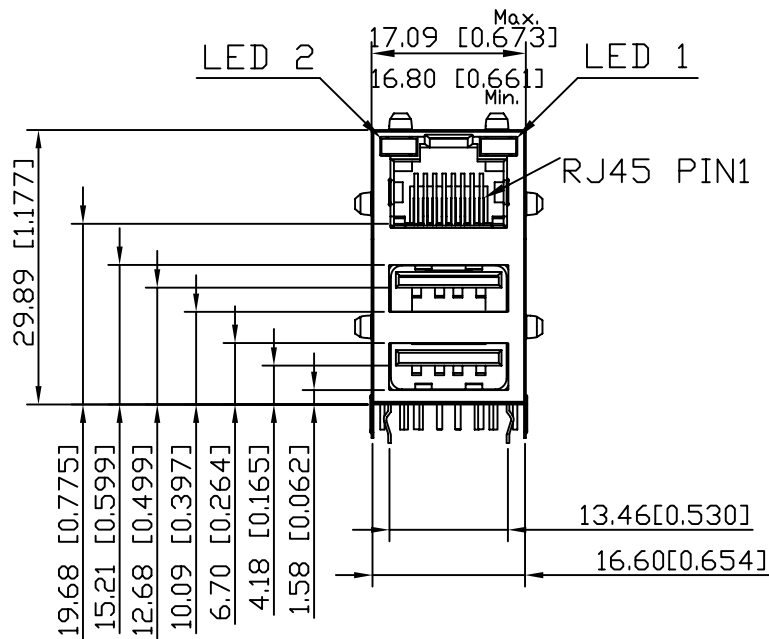
NOTES:

1. RJ45 MECHANICAL:

PLASTIC HOUSING: THERMOPLASTIC PBT BLACK
 FLAMMABILITY RATING UL 94V-0
 FRONT CONTACT: PHOSPHOR-BRONZE T=0.35mm±0.01
 30u" GOLD PLATING ON CONTACT AREA,
 OVER 50u" NICKEL PLATING ON ALL AREA,
 WITH 100u" TIN PLATING ON SOLDER AREA.
 BACK CONTACT: BRASS T=0.40mm±0.01
 50u" NICKEL PLATING ON ALL AREA,
 WITH 100u" TIN PLATING ON SOLDER AREA.
 SHIELD: BRASS T=0.20mm±0.01
 50u" NICKEL PLATING ON ALL AREA.
 SOLDERABILITY: PER MIL STD. 202, METHOD 208.
 DURABILITY: 750 MATING CYCLES MIN.

2. USB MECHANICAL:

HOUSING: HIGH TEMP. THERMOPLASTIC
 BLACK, UL 94V-0
 CONTACT: PHOSPHOR-BRONZE T=0.30mm±0.01
 GOLD FLASH PLATING ON CONTACT AREA,
 OVER 50u" NICKEL PLATING ON ALL AREA,
 WITH 100u" TIN PLATING ON SOLDER AREA.
 SHIELD: BRASS T=0.30mm±0.01
 100u" TIN PLATING ON SOLDER AREA,
 OVER 50u" NICKEL PLATING ON ALL AREA.
 MATING FORCE: 35 NEWTONS MAXIMUM
 UNMATING FORCE: 10 NEWTONS MINIMUM
 DURABILITY: 1500 MATING CYCLES MIN.
 3. UNSPECIFIED TOLERANCE: .XX ±0.25[0.01]
 .X ±0.30[0.012]



RECOMMENDED
 PANEL CUTOUT DIMENSION

RoHS Compliant

XRJB-K60-X-E22-01

PRODUCT SERIES
 B : RJ45 OVER USB

CIRCUIT TYPE

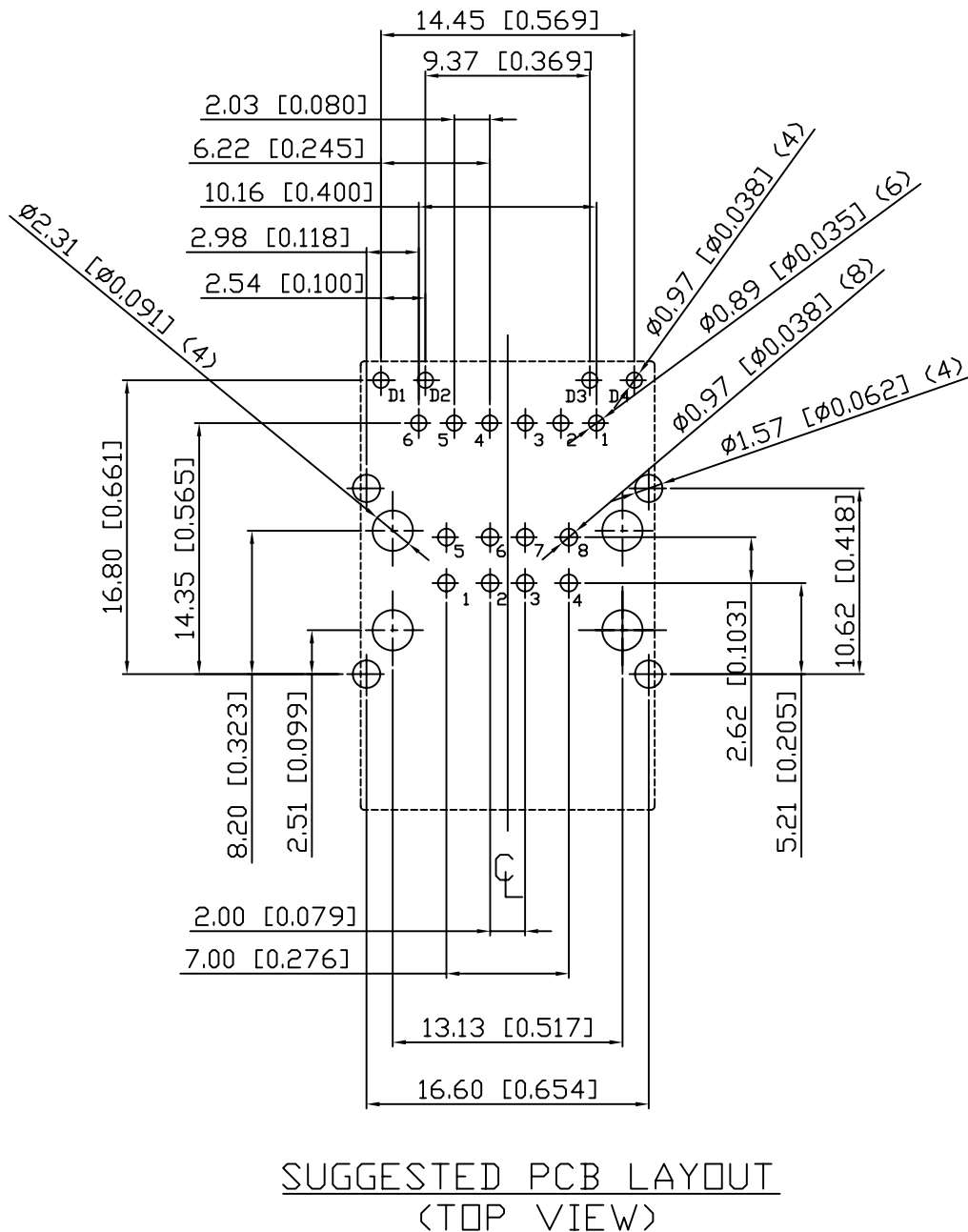
LED COLOR OPTION

NUMBER OF PORT
 K60 : RJ45 OVER DUAL USB A TYPE
 K6 SERIES

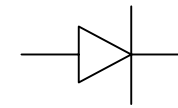
SERIAL NUMBER

		CONNECTING THE INFORMATION AGE	
		CUSTOMER/NO:	
MULTIPLE ASIA 4F, No. 347, Yang Guang St., Neihu Chiu, Taipei, Taiwan 11475		MULTIPLE USA 1420 Los Angeles Ave., Suite G, Simi Valley, CA 93065	
THIS DRAWING IS A CONTROLLED DOCUMENT.			
TITLE: RJ45+USB A Type Daul, w/LED, w/Filter 10/100 Mbps, 8P,6C, Shielded, Thru-Hole		DWG NO: XRJB-K60-X-E22-01	
PART NO: XRJB-K60-X-E22-01		DRAWN: TARA	
		UNIT mm[inch]	SHEET 1 of 3
		REV 01	DATE: 26/10/05

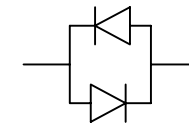
2. PCB LAYOUT :



3. LED CONFIGURATION :



SINGLE-COLOR LED



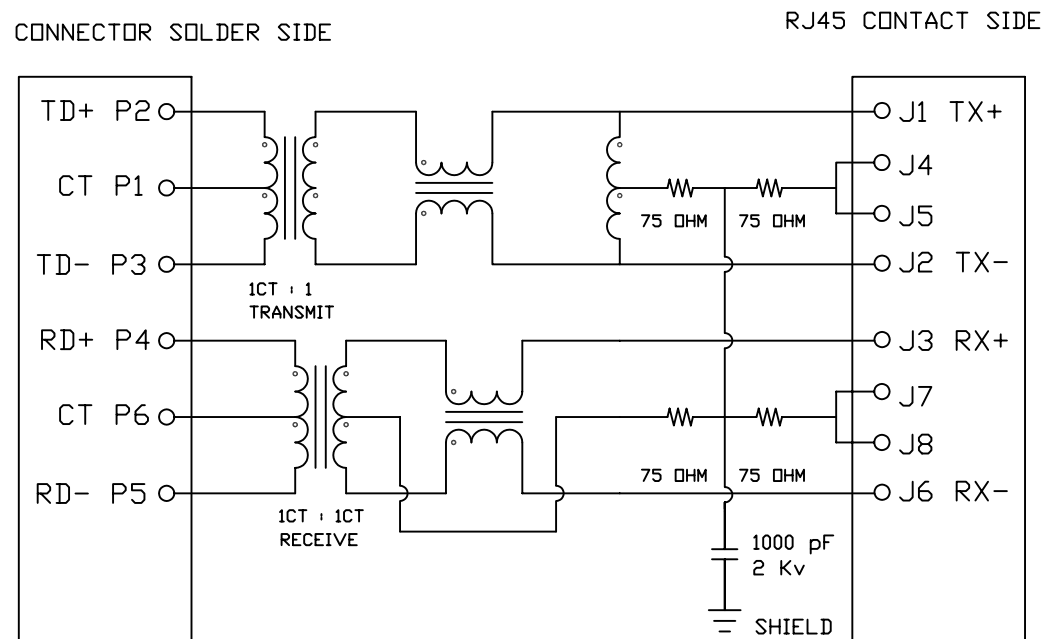
BI-COLOR LED

Color	Lens Color	Vf(v) @20mA		Iv(mcd) @10mA		Viewing angle 2θ 1/2
		Min	Max	Min	Typ	

RoHS Compliant

		CONNECTING THE INFORMATION AGE		CUSTOMER/NO:	
				X MULTIPLE ASIA 4F, No. 347, Yang Guang St., Neihu Chiu, Taipei, Taiwan 11475	
THIS DRAWING IS A CONTROLLED DOCUMENT.					
TITLE: RJ45+USB A Type Daul, w/LED, w/Filter 10/100 Mbps, 8P,6C, Shielded, Thru-Hole				DRAWN: TARA	
PART NO: XRJB-K60-X-E22-01				CHKD: JEFF	
		UNIT	SHEET	REV	DATE:
mm[inch]		2 of 3	01	26/10/05	

4. SCHEMATIC:



5. ELECTRICAL CHARACTERISTICS :

TEST NOTES:($25 \pm 5^\circ\text{C}$)

1.TR:(100KHz,0.1V);

PINS:(P2-P3):(J1-J2)=1:1 \pm 3%

PINS:(P4-P5):(J3-J6)=1:1 \pm 3%

2.LX:(100KHz,100mV,8mA, DC Bias)

PINS: (P2,P3),(P4,P5)=350uH MINIMUM

3.DCR:

PINS:(P2-P3),(J1-J2),(J3-J6)= 1.0 OHMS MAXIMUM

PINS:(P4-P5)=1.2 OHMS MAXIMUM

4.HIPOT:

PINS(P2,P1,P3)TO(J1,J2)=1500VAC FOR 60 SECONDS

PINS(P4,P6,P5)TO(J3,J6)=1500VAC FOR 60 SECONDS

5.INSERTION LOSS:

-1.0dB MAXIMUM AT 0.3MHz TO 100MHz;

6.RETURN LOSS:

-20dB MINIMUM AT 1MHz TO 30MHz;

-15dB MINIMUM AT 30MHz TO 60MHz

-10dB MINIMUM AT 60MHz TO 80MHz

7.CROSS TALK:

-30dB MINIMUM AT 1MHz TO 100MHz

8.COMMON TO COMMON MODE REJECTION:

-30dB MINIMUM AT 1MHz TO 100MHz

RoHS Compliant

		CONNECTING THE INFORMATION AGE	
MULTIPLE ASIA 4F, No. 347, Yang Guang St., Neihu City, Taipei, Taiwan 11475		MULTIPLE USA 1420 Los Angeles Ave., Suite G, Simi Valley, CA 93065	
THIS DRAWING IS A CONTROLLED DOCUMENT.			
TITLE: RJ45+USB A Type Daul, w/LED, w/Filter 10/100 Mbps, 8P,6C, Shielded, Thru-Hole			
PART NO: XRJB-K60-X-E22-01			
		UNIT mm[inch]	SHEET 3 of 3
		REV 01	DATE: 26/10/05